



WORKINGAGE
Smart Working Environments for All Ages

FACT SHEET #3

Pilot tests are on progress, an adventure in which workers over 45 years of age have used the WAOW Tool to improve their well-being at work and in their free time. For this reason, different companies are collaborating in the WorkingAge project in the pilot phase. They are Mutua Universal and Grupo Antolín in Spain and EXUS in Greece, where the office, manufacturing and teleworking use cases are studied, respectively.

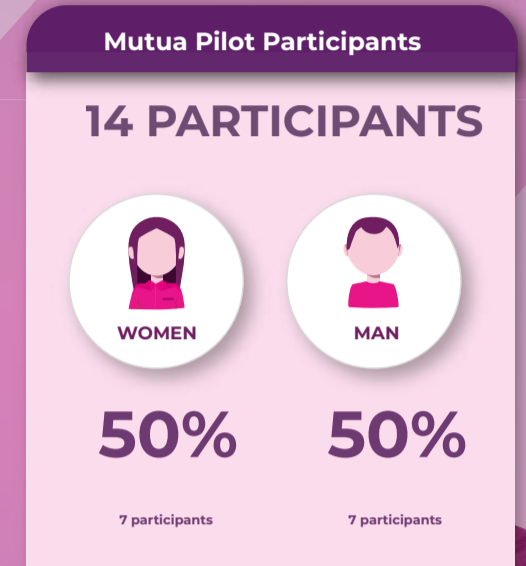


Mutua Universal

The competences of Mutua Universal include, among other preventive activities, research, development and innovation activities, aimed at reducing accidents and improving prevention, occupational risks, safety and health of the recipients of our services. The promotion of healthy habits in the work environment and the consideration of the characteristics of vulnerable groups, together with the commitment to innovation and the use of technological advances, are decisive to improve working conditions, as well as health and well-being of people, their quality of life and especially active aging.

Mutua Universal employees participate in WorkingAge project on a voluntary basis, demonstrating their commitment to innovation and health promotion. The tests objective is to help the participants to improve their health habits, as well as to enrich the WOAW Tool with the contributions made by the users.

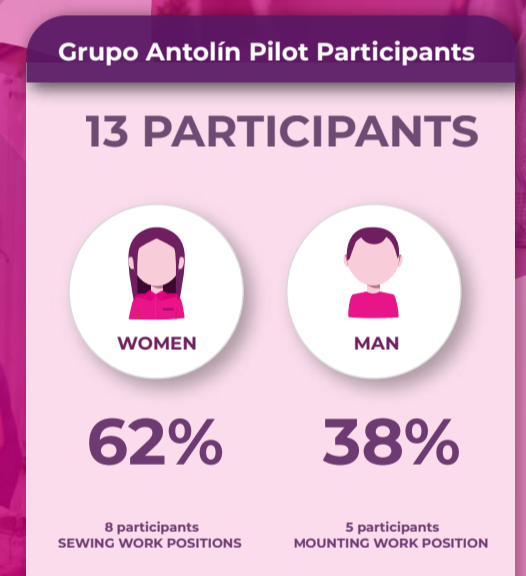
| SENSORS USED | |
|----------------------|------------|
| At my work place | At Home |
| Mobile Phone | |
| Camera 1 & 2 | |
| NoiseBox | |
| Microphone | |
| Activity Tracker | |
| Wristband-Empatica | |
| Headband-Muse 2 | |
| Eye Traking Device | |
| Environmental Sensor | |
| | Body Scale |



Grupo Antolín, one of the leading interior manufacturers worldwide with over 150 plants in 26 countries, has achieved this strong industry presence through over seventy years of working with their customers in order to develop a complete cycle of component manufacturing, from their conception and design, through the development and validation stages, to their industrialisation and sequenced delivery. Grupo Antolín RyA Valladolid is dedicated to the manufacture of components, parts and accessories for motor vehicles.

As a result of Grupo Antolín RyA Valladolid's strong collaboration with the WorkingAge project, its production workers have benefited from the WAOW Tool during their working day. This tool provides relevant tips for the workers, such as promoting awareness on their posture when performing different tasks to improve it, and in their free time, sending active recommendations for improving their sleep patterns, and advice for different aspects on healthy living.

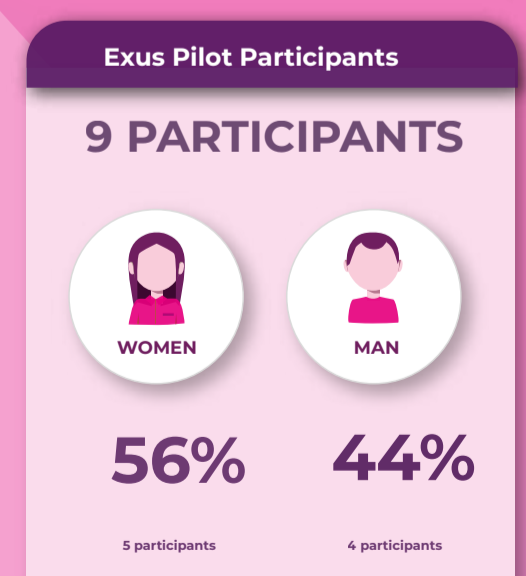
| SENSORS USED | |
|----------------------|------------|
| At my work place | At Home |
| Mobile Phone | |
| Camera 1 & 2 | |
| NoiseBox | |
| Activity Tracker | |
| Wristband-Empatica | |
| Headband-Muse 2 | |
| Environmental Sensor | |
| | Body Scale |



EXUS is an enterprise software company specializing in credit risk management, digital transformation services and innovation management. EXUS supports organisations worldwide to improve their results by introducing simplicity & intelligence in their business processes through state of the art technology. EXUS designs, creates and markets software solutions and services in several business areas such as finance, e-health, e-learning, and security. EXUS covers a wide range of activities by leveraging the expertise of its 130+ people strong technical divisions that are led by expert project managers and senior consultants.

Due to the COVID-19 pandemic, EXUS has transitioned to a remote working environment. Despite the challenges of teleworking, the promotion of healthy habits among its workforce, particularly to workers over the age of 50, remains a priority. The WAOW Tool affords precisely such an opportunity. Through the pilot use of the developed technology in the WorkingAge project, our employees can benefit from a digital personal assistant that can lead to healthy aging both inside and outside of the working environment.

| SENSORS USED | |
|------------------------|--------------------|
| Fixed at my work place | Everywhere at Home |
| Mobile Phone | |
| Camera 1 & 2 | |
| NoiseBox | |
| Microphone | |
| Activity Tracker | |
| Wristband-Empatica | |
| Headband-Muse 2 | |
| Environmental Sensor | |
| | Body Scale |



WANT TO KNOW MORE?

www.workingage.eu

[in https://www.linkedin.com/in/workingage-EU/](https://www.linkedin.com/in/workingage-EU/)

https://twitter.com/Workingage_EU



This project has received funding from the European Union's Horizon 2020 research and innovation programme under grant agreement N. 826232